

Sand & Sage Round-Up Jr. Market Poultry Study Guide

Study the Member's Project Guide and the Sand & Sage Round-Up Fair Book

Avian-Relating to or pertaining to birds of all feathered species

Bantams-Miniature chickens, usually one-fourth to one-fifth the weight of regular chickens

Breed-A group of birds related by breeding with the same physical traits

Broiler-A young, meat-type chicken

Chick-A newly hatched chicken of either sex

Coop-The place where chickens are kept; at shows, the cage in which a chicken is exhibited

Flock-A group of chickens living together

Hen-A female of many avian species

Pullet-A female chicken less than one year old

Rooster-A male domestic fowl

There are four basic needs for your chickens: water, food, shelter and care

Know how to care for your chickens

Know the Parts of the Chicken

Sand & Sage Round-Up Int. Market Poultry Study Guide

Study the Member's Project Guide and the Sand & Sage Round-Up Fair Book

Avian-Relating to or pertaining to birds of all feathered species

Bantams-Miniature chickens, usually one-fourth to one-fifth the weight of regular chickens

Breed-A group of birds related by breeding with the same physical traits

Broiler-A young, meat-type chicken

Chick-A newly hatched chicken of either sex

Comb-The fleshy, protruding part on top of the head of a chicken

Conformation Defect-Breasts that have dented, crooked or knobby breastbones, narrow, crooked, humped or hunched backs, deformed legs and wings

Coop-The place where chickens are kept; at shows, the cage in which a chicken is exhibited

Down-A layer of fine feathers

Feathering Defect-Pin feathers, discoloring areas of skin due to broken feathers, sunburn or barebacks

Finish Defects-Lack of fat cover in the skin between the heavy feather tracts, in the collar of the wishbone, where thigh skin joins the breast or around the tail or abdominal region

Fleshing Defects-Breasts do not carry the width well back to the end of the keel or are v-shaped or concave rather than full and rounded. Thin drumsticks and thighs. Backs poorly fleshed along the vertebrae and around the hip bones

Flock-A group of chickens living together

General Defects-Cuts and tears, broken or disjointed bones, skin or flesh bruises anywhere other than on the wing tip, breast blisters or cysts

Hen-A female of many avian species

Meat Quality Assurance-(MQA) Assures customer satisfaction. When meat quality is high, consumers will buy again

Pullet-A female chicken less than one year old

Rooster-A male domestic fowl

There are four basic needs for your chickens: water, food, shelter and care

Know how to handle your bird

Know how to administer medication to your bird

Know how to figure profit/loss

Know the Parts of the Chicken

Sand & Sage Round-Up Sr. Market Poultry Study Guide

Study the Member's Project Guide and the Sand & Sage Round-Up Fair Book

Avian-Relating to or pertaining to birds of all feathered species

Bantams-Miniature chickens, usually one-fourth to one-fifth the weight of regular chickens

Breed-A group of birds related by breeding with the same physical traits

Broiler-A young, meat-type chicken

Chick-A newly hatched chicken of either sex

Cock-A male chicken more than one year of age

Comb-The fleshy, protruding part on top of the head of a chicken

Conformation Defect-Breasts that have dented, crooked or knobby breastbones, narrow, crooked, humped or hunched backs, deformed legs and wings

Coop-The place where chickens are kept; at shows, the cage in which a chicken is exhibited

Down-A layer of fine feathers

Feathering Defect-Pin feathers, discoloring areas of skin due to broken feathers, sunburn or barebacks

Finish Defects-Lack of fat cover in the skin between the heavy feather tracts, in the collar of the wishbone, where thigh skin joins the breast or around the tail or abdominal region

Fleshing Defects-Breasts do not carry the width well back to the end of the keel or are v-shaped or concave rather than full and rounded. Thin drumsticks and thighs. Backs poorly fleshed along the vertebrae and around the hip bones

Flock-A group of chickens living together

Fryer-(Broiler)-A young, meat-type chicken, usually processed before eight weeks of age

General Defects-Cuts and tears, broken or disjointed bones, skin or flesh bruises anywhere other than on the wing tip, breast blisters or cysts

Hen-A female of many avian species

Intramuscular Injection-(IM)Most commonly used. Inserting the needle straight into the skin and deep into the muscle

Intravenous Injection-(IV) Provides a rapid means of getting the medication into the system of a sick animal as well as eliminating the chance of tissue damage. These are given directly into the bloodstream

Keel-The flexible wedge of cartilage connecting a chicken's breast muscles at the tip of the breastbone or an extension of the breastbone

Meat Quality Assurance-(MQA) Assures customer satisfaction. When meat quality is high, consumers will buy again

Pullet-A female chicken less than one year old

Rooster-A male domestic fowl

Spur-Horny projection on the rear innermost portion of shank

Subcutaneous Injection-(SQ) Inserting the needle just under the skin and not in the muscle.

These are designed for a slower rate of absorption or are highly irritating to muscle tissue

There are four basic needs for your chickens: water, food, shelter and care

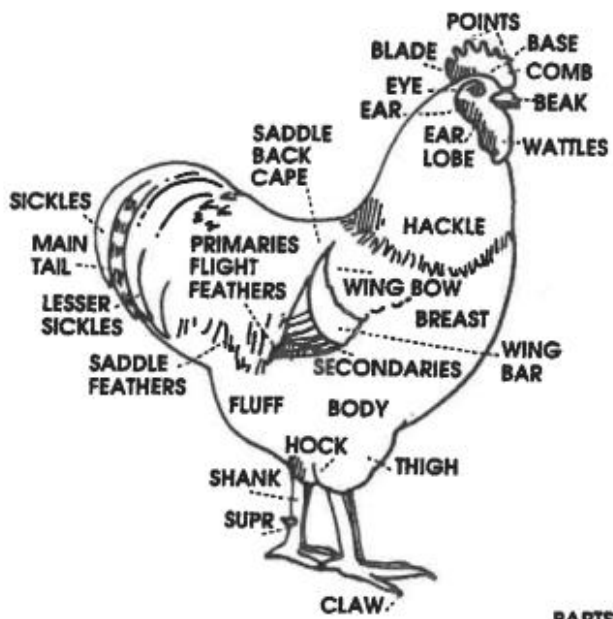
Know how to handle your bird and care for your bird

Know what is required to be on a feed tag

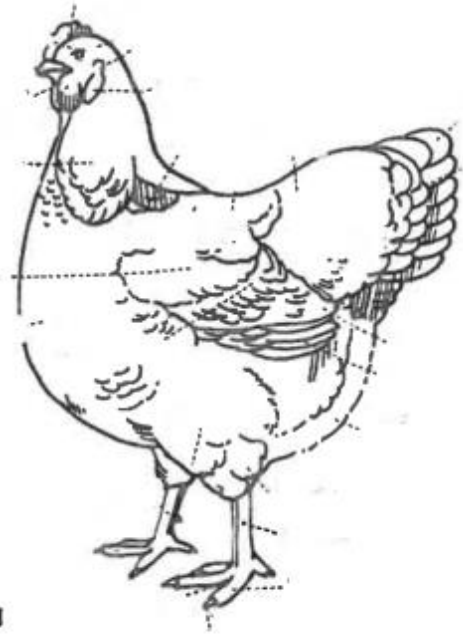
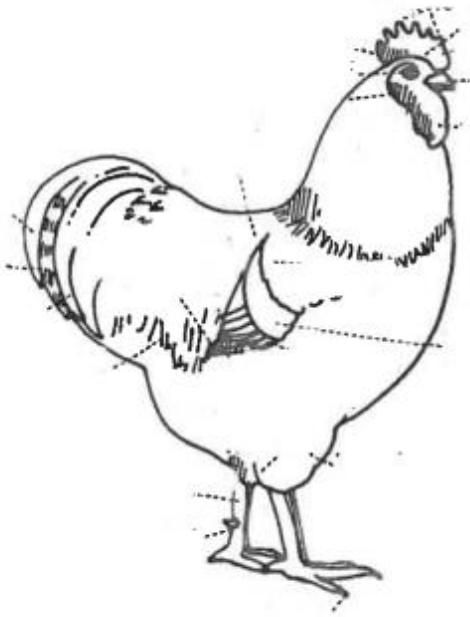
Know how to administer medication to your bird

Know how to figure profit/loss

Know the Parts of the Chicken



PARTS OF A CHICKEN
YOU SHOULD KNOW



**PARTS OF A CHICKEN
YOU SHOULD KNOW**